

Additional Operations

Available on 29/26/24 ga. Metal Flashings



- PERFORATIONS:**
- Holes - 3/4" holes on 2" or 4" centres in 1, 2 or 3 Rows
 - Slots - 1/8" x 1" slots in 1, 2 or 3 Rows to a max. length of 144"
 - NOTE: 1 row of Slotted Perforations @ 240 slots/row gives the same amount of ventilation as either 2 rows of 3/4" holes on 4" centres or 1 row of 3/4" holes on 2" centres

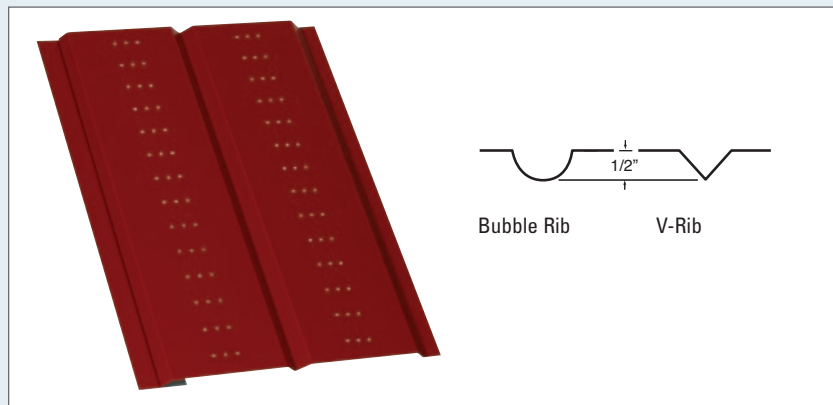
- FLY SCREENS:**
- 2" - 5" wide can be installed in any Vented Soffit

PUNCHING (minimum run size 50 pieces):

- Maximum length: 12' 0"
- Hole diameters from 1/8" to 1" in 1/16" increments
- Holes on 1 1/4" centres
- In 1, 2 or 3 rows

RIBS:

- Bubble Rib or V-Rib
- Maximum length: Bubble Rib: 10' - 0" V-Rib: 20' - 2"
- Rib Depth: Bubble Rib: 1/2" V-Rib: 1/2"



- SPV COATING:**
- Application of protective plastic coating to flat sheets
 - Available for 48" wide sheets

BREAK CORNER BOX TO ROOFLINE:

- Form Corner Box to roof pitch on gable side of building

BRAKE FORMING:

- Up to 20' long in most shapes

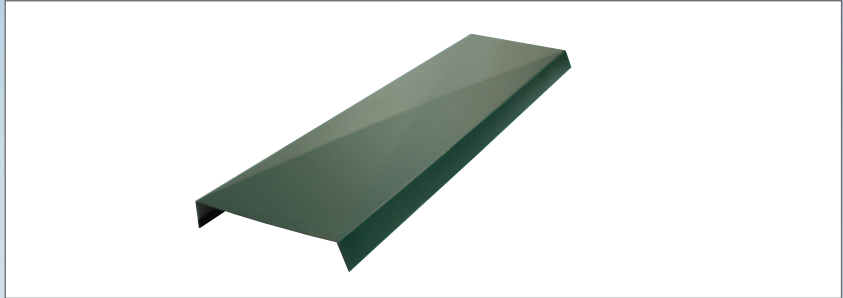


Additional Operations

Custom Trim Bend Examples

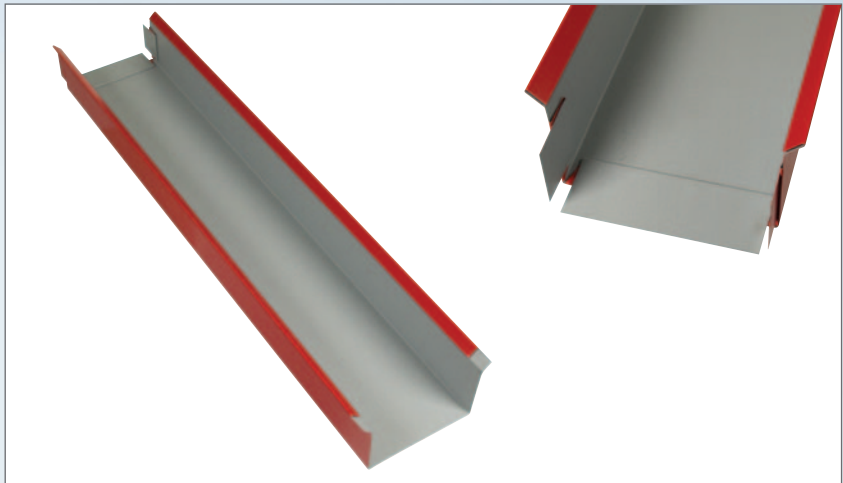
CROSSBREAKING:

- A brake-formed cross added as stiffening to large flat surfaces of flashing



'S' LOCK:

- Girth up to 48"



SWAGING:

- Maximum thickness: 22 Gauge

