

# TRUSSCORE™



PVC Interlocking Liner Panel



MADE IN CANADA • FABRIQUÉ AU CANADA

*Easier to do Business with...*  
**AGWAY METALS INC.**

*...pour vous faciliter les Affaires*



Wherever you need a smooth finish that is easy to clean, low maintenance and abuse resistant, TRUSSCORE PVC Sanitary Wall and Ceiling Panel has your project covered.

Dairy, Hog, and Poultry Farms  
 Car Washes  
 Home Ceiling / Wall Panels  
 Kennels  
 Riding Stables  
 Marinas  
 Fisheries

Food Processing Plants  
 Chemical Processing Plants  
 Meat Packaging Facilities  
 Restaurant Kitchens  
 Supermarkets  
 Laboratories  
 Theme Parks

Breweries  
 Nursing Homes  
 Health Care Facilities  
 Public Bathrooms  
 Refrigerated Warehouses  
 Schools  
 Laundromats



TRUSSCORE'S unique truss design provides outstanding spanning capability as well as high-strength.

TRUSSCORE'S surface is highly durable and resistant to scratches, chemicals and moisture.

TRUSSCORE PVC Interlocking Liner Panel comes in standard 10', 12', 16' & 20' lengths. Custom lengths are available.



**Key Advantages Include:**

- Industry leading 1/2" thick heavy wall design
- Inner truss design for rigidity and high strength
- Cost effective
- Can be used for new construction or retrofit
- Bright clean appearance
- Virtually maintenance free
- Meets CFIA (Canada) and FDA (U.S.A.) requirements for walls and ceilings
- Comes in standard and custom lengths
- Corrosion-resistant
- Hidden fasteners
- Highly resistant to moisture and most chemicals
- Ideal replacement for conventional wall systems
- Lightweight, fast easy installation
- Supports attic insulation loads
- Pre-punched nailing flange



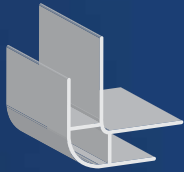
## Specifications



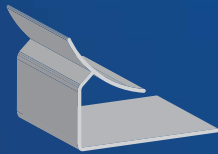
- TRUSSCORE PVC Interlocking Liner Panel comes in standard 10', 12', 16' and 20' lengths.
- Custom lengths are available.

Trusscore's unique tongue-and-groove interlocking system makes both vertical and horizontal installation quick and easy.

## Trims and Flashing



INSIDE/OUTSIDE CORNER



INSIDE COVE



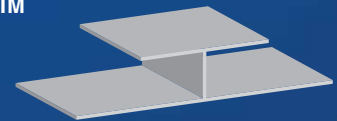
OUTSIDE CORNER



J TRIM

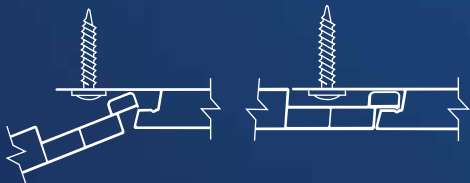


BASE TRIM



H DIVIDER

## Fastener Detail



## Panel Variances

- Bowing: 1/16" per every 2' 8" of panel produced
- Top and bottom thickness - 0.51 thou + or - 10%
- Face width may vary 3/16"

## Additional Information

For more information or for downloadable copies of applicable standards or installation instructions, refer to: [www.agwaymetals.com/Trusscore](http://www.agwaymetals.com/Trusscore)

## Ratings

- Flame Spread Classification of 5 as per CAN/ULC S102.2-10
- Meets CFIA (Canada) and FDA (U.S.A.) approval requirements for walls and ceilings.



Agway Metals Inc.

170 Delta Park Blvd.

Brampton, ON L6T 5T6

TF. 1.800.268.2083

T. 905.799.7535

F. 905.799.3486

[agwaymetals.com](http://agwaymetals.com)